

ET-1002

10 inch color Display

The ET-1002 is a 10" fully graphical, color TFT display, perfect for dynamic customer interaction in stores or POS advertisement.



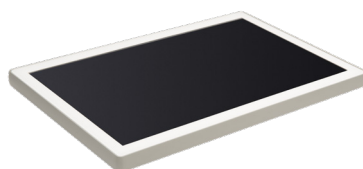
Grab the attention of the customers!

The ET-1002 is a 10" full color TFT display that is designed to be attached to product shelves, walls or in other POS applications. The ET-1002 is the perfect product to grab your customers attention at the point-of-sale with dynamic content. It can also be used to set a specific mood or to provide more product information.



Highlights

- Full color display
- Dynamic content; like video's
- More interaction with customers
- Large 10" display
- Content management via Wi-Fi or USB
- Charging via cable
- Wi-Fi 2.4 and 5 GHz



ET-1002

Product Specifications

ET-1002 Wall mount and & Rail mount

10 inch Digital Signage display for retail applications compatible to connect to a power cable.

Operation

CPU: 8-core Cortex A53, 1.4GHz

Memory

Internal Flash: 4GByte eMMC

Internal RAM: 1GByte DDR3, 800 MHz

Supporting files: HTML5, MP4, AVI, JPEG, GIF, PNG

Communication

USB: Ver. 2.0

Wi-Fi: Wi-Fi 802.11ac

Zigbee: Proprietary protocol

Bluetooth: Ver. 4.1 (+BTLE)

Power

Input: 12 ~ 48V

Energy consumption: 10 watt

Backup battery: Rechargeable Lithium-Ion battery 3.7V 200mAh

Display

Size: 10", 1280 x 800 pixels (WxH), 24Bit RGB color

Active area: 135.6 x 216.96 mm (WxH)

Viewing angle: 85° in all directions (contrast ratio > 10)

Dot Pitch: 0.1695 x 0.1695

Mode: Portrait and landscape

Durability

Temperature in operation: 0 to 40 °C / 32 to 104 °F

Temperature in storage: 0 to 40 °C / 32 to 104 °F

Humidity in operation: 10 - 90% (non-condensing)

Humidity in storage: 10 - 90% (non-condensing)

Physical

Dimensions (WxHxD): 241.9 x 160.7 x 21.8 mm

Weight: Ca. TBD

Colors: White (optional custom colors)

Regulatory & Safety

Product compliance: RoHS / WEEE, FCC, CE (RED), IEC60950 (ITE Safety part 1)

Mounting options

More details available soon.

